

SAE SHORT PORT CONTOUR CUTTERS INTERNAL STRAIGHT THREAD O-RING BOSS

HIGH SPEED STEEL STRAIGHT SHANK

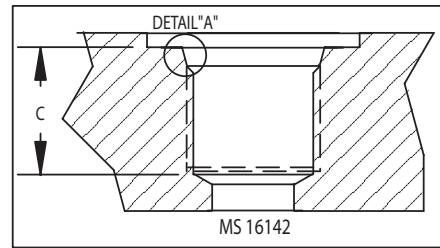
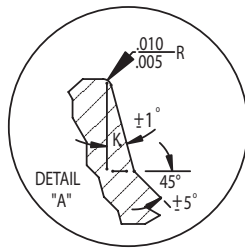
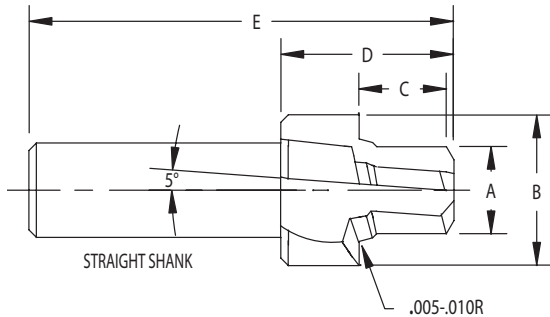
MS16142 / J514 / J1926



Reamer pilot series porting tools profile the MS16142/J514F/J1926 contour with a reduced spotface diameter. The reamer pilot also sizes the minor diameter per class 2B thread specification. Cutters are heat treated for toughness and durability. All tolerances are held within applicable Mil Specs. All grinding is done between centers to insure concentricity.

COATINGS AVAILABLE

**TITANIUM NITRIDE-TIN
TITANIUM CARBONITRIDE-TICN
TITANIUM ALUMINUM NITRIDE-TIALN
AL TITANIUM NITRIDE-ALTN**



COOLANT THRU AVAILABLE • All diameters and dimensions can be altered to meet your requirements

TOOL NUMBER	TUBE NO.	TUBE SIZE	THREAD SIZE	A REAMER DIA.	B SPOTFACE DIA.	C REAMER LENGTH	D HEAD LENGTH	E OAL LENGTH	SHANK DIMENSIONS	
									SHANK DIA.	SHANK LENGTH
SP-02H	2	1/8	5/16-24	.272	.469	.473	1-1/8	3-1/8	.500	2
SP-03H	3	3/16	3/8-24	.335	.531	.473	1-1/4	3-1/4	.500	2
SP-04H	4	1/4	7/16-24	.389	.594	.552	1-1/4	3-1/4	.500	2
SP-05H	5	5/16	1/2-24	.452	.656	.552	1-1/4	3-1/4	.500	2
SP-06H	6	3/8	9/16-18	.509	.719	.614	1-1/4	3-1/4	.500	2
SP-08H	8	1/2	3/4-16	.689	.906	.693	1-3/8	3-3/8	.750	2
SP-10H	10	5/8	7/8-14	.806	1.031	.786	1-5/8	3-5/8	.750	2
SP-12H	12	3/4	1-1/16-12	.981	1.281	.911	1-7/8	4-1/8	.750	2-1/4
SP-14H	14	7/8	1-3/16-12	1.106	1.423	.911	1-7/8	4-1/8	.750	2-1/4
SP-16H	16	1"	1-5/16-12	1.231	1.562	.911	1-7/8	4-1/8	.750	2-1/4
SP-20H	20	1-1/4	1-5/8-12	1.544	1.910	.911	2	4-1/4	1.000	2-1/4
SP-24H	24	1-1/2	1-7/8-12	1.794	2.172	.911	2	4-1/4	1.000	2-1/4
SP-32H	32	2	2-1/2-12	2.419	2.797	.911	2-1/4	4-1/2	1.000	2-1/4

